



A Better Understanding of Nuclear Regulation in Canada

Certificate Program in Regulatory Leadership Study Tour –
The Canadian Nuclear Safety Commission

Colin Moses

Director General

Directorate of Nuclear Substance Regulation

Regulatory Operations Branch

February 2, 2016





Nuclear Substances Regulatory Program



Industrial

Use of nuclear substances in production facilities or as part of fieldwork or construction



Commercial

Production, processing, storage and distribution of nuclear substances, and servicing and calibration of radiation devices and prescribed equipment



Medical

Use of nuclear substances for diagnostic and therapeutic purposes



Academic and Research

Use of nuclear substances in universities, colleges and research laboratories for research and teaching purposes



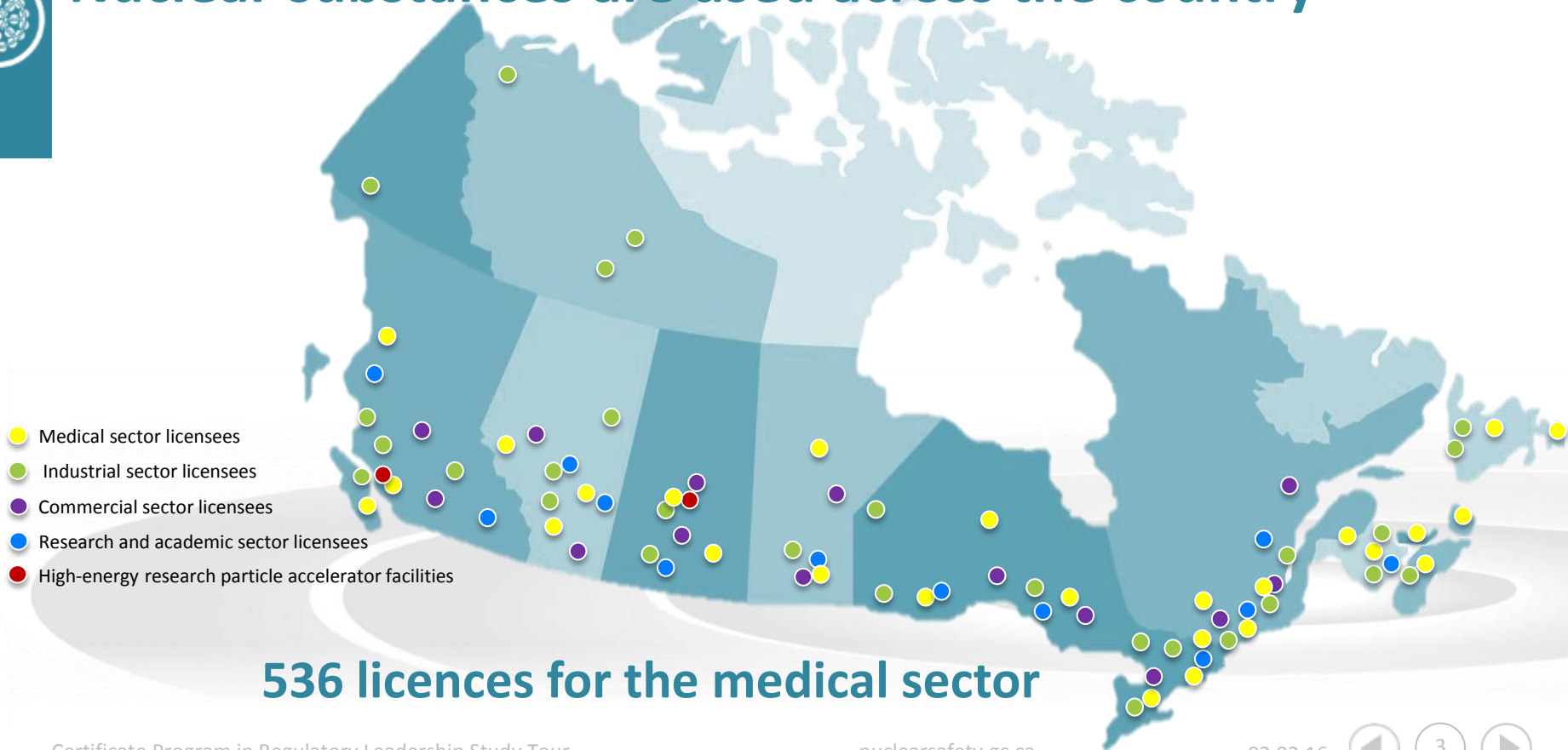
High-energy research particle accelerators

Use of nuclear substances for particle physics, biology and materials research, as well as other fields

All the non-nuclear uses of nuclear



Nuclear substances are used across the country





Scope and Jurisdictions

Health Canada

- Focused on effectiveness and patient safety
- “Licence” issued to manufacturer
- Requires “good manufacturing practices”

Provinces

- Focused on general health and safety
- Also oversees hospital administration and management

CNSC

- Focused on nuclear and radiation safety
- Protection of workers, public and environment





Areas of Oversight

Devices

- Certify “prescribed equipment”
 - accelerators and radiation therapy machines
- Ensure adequacy of design and safety features

Activities

- Licence possession and use of nuclear substances and equipment
 - isotope production
 - nuclear medicine
 - prescribed equipment
- Ensure adequacy of facility design, programs and controls to ensure protection of workers, the public and the environment





Regulatory Tools

Setting requirements

- Regulations
- Licences/certificates

Assessing compliance

- Inspections
- Regulatory reporting

Enforcement

- Orders
- Licensing action
- Administrative monetary penalties
- Etc.





Challenges

Consistency

Risk-informed approach

Safety culture / continuous improvement

People (and pets and cadavers)





Thank you

Questions?



Visit us online



Like us on Facebook



Follow us on Twitter



View us on YouTube



Subscribe to updates



Contact us